

## Direct Connection of Inline Suction – Good Patient Care?

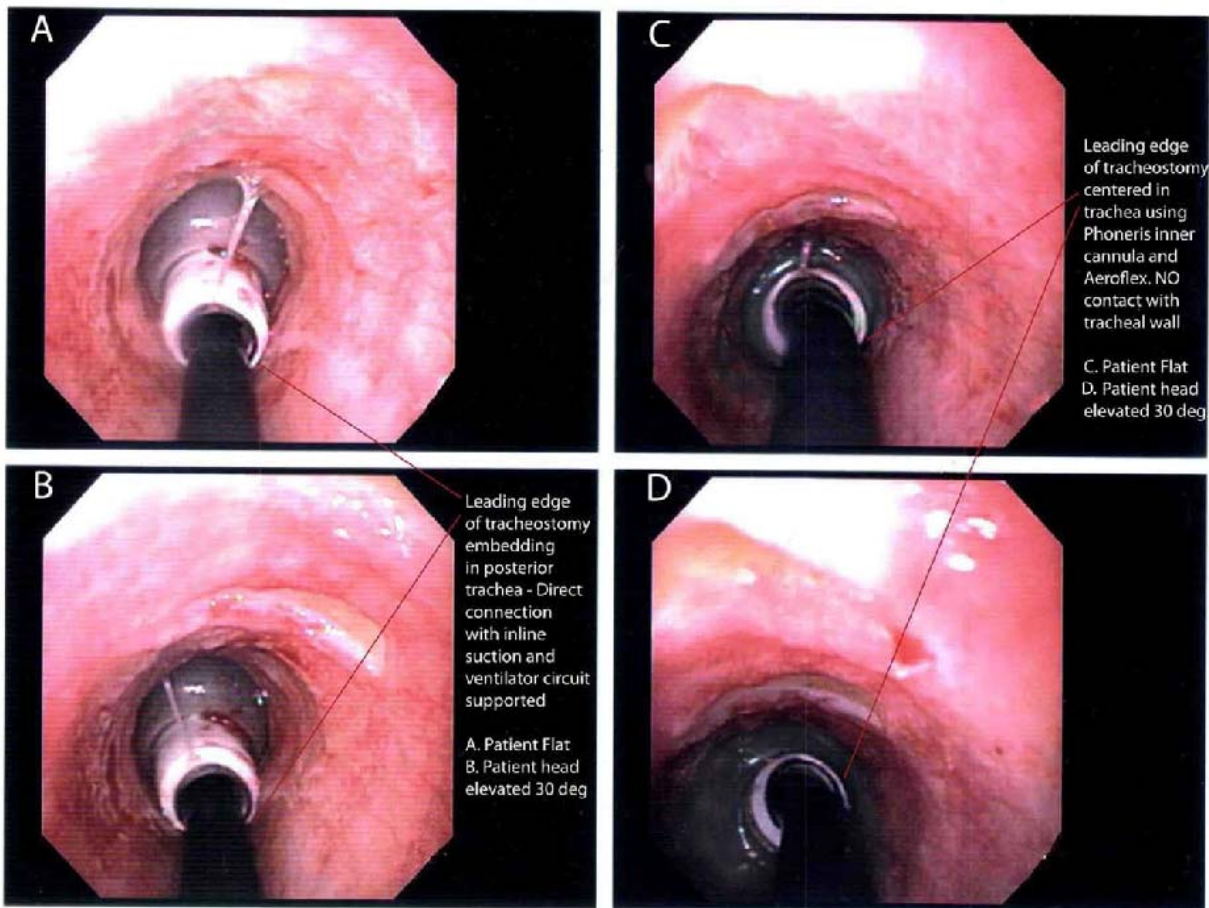
### *An Insider's View*

Below is an endoscopic view of the trachea.

Pictures A & B: Direct connection of the inline suction to the tracheostomy tube.

Pictures C & D: Connection of the inline suction to the Phoneris<sup>®</sup> Inner Cannula and AeroFlex<sup>®</sup> Ventilator Circuit Connector

All four pictures were from the same patient and were taken with equal ventilator circuit support. The pictures illustrate the difference in the position of the leading edge of the tracheostomy tube relative to the center of the trachea. Increased weight, length, and lever action of direct connection pushes the leading edge of the tracheostomy tube into the posterior trachea, potentially leading to patient discomfort, difficulty passing the inline suction catheter, and tracheal trauma/erosion/perforation.



## Look Familiar?

